



# Project Guide

## Starry Night ▪ platter or light shade

Glass Cutting: **simple straight lines**

Firings: **contour fuse, slump optional**

Accessories: **rubber washers** (see Variations)



### Step-by-Step

1. Cut four 3.5" squares: two from the black sheet, and two from the white.
2. With pinpoints of glue, affix squares in the center of your Blank, leaving space around the edges for a row of Chips.
3. Using pinpoints of glue, add Chips around the edges and your two CutUps.
4. Contour or Full fuse (see Keys to Success, at right).
5. If desired, slump into shallow bowl mold.

### Variations

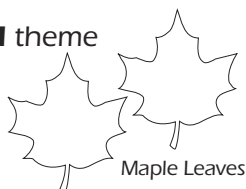
After slumping, use a diamond drill bit to make a hole in the center. Use your creation as a dramatic shade for a ceiling light! Use a couple of little rubber washers to protect the glass when screwing into place.

Consider these "pairs" of CutUps and what colors would look great with them:

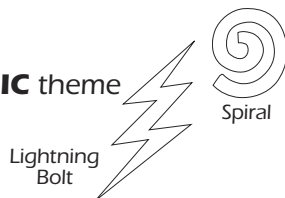
#### SEA theme



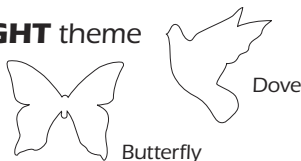
#### AUTUMN theme



#### MAGIC theme



#### FLIGHT theme



### Materials We Used

**Blank:** 8" clear square

**Glass Colors:** Black 1009SF, White 200SF

#### Chips:

- 28 - Med. Blue opal 230-72SF
- 4 - opal Yellow 260-72SF
- 12 - black1009SF
- 12 - white 200SF

**CutUps™:** white Star and Crescent

### Note:

**Chips** = 1/2" glass squares

### Keys to Success

Repeating colors in different forms tie this design together.

Fusing choices:

- CONTOUR fuse will retain dimension on the CutUps.
- FULL fuse will produce the smoothest edges.
- FULL fuse without CutUps, then TACK fuse for the CutUps is the best of both worlds!